

Lexical convergence and divergence in Austrian parliamentary debates: a network-based approach

Anna Marakasova¹, Klaus Hofmann², Andreas Baumann², Julia Neidhardt¹, Tanja Wissik³

Parliamentary discourse

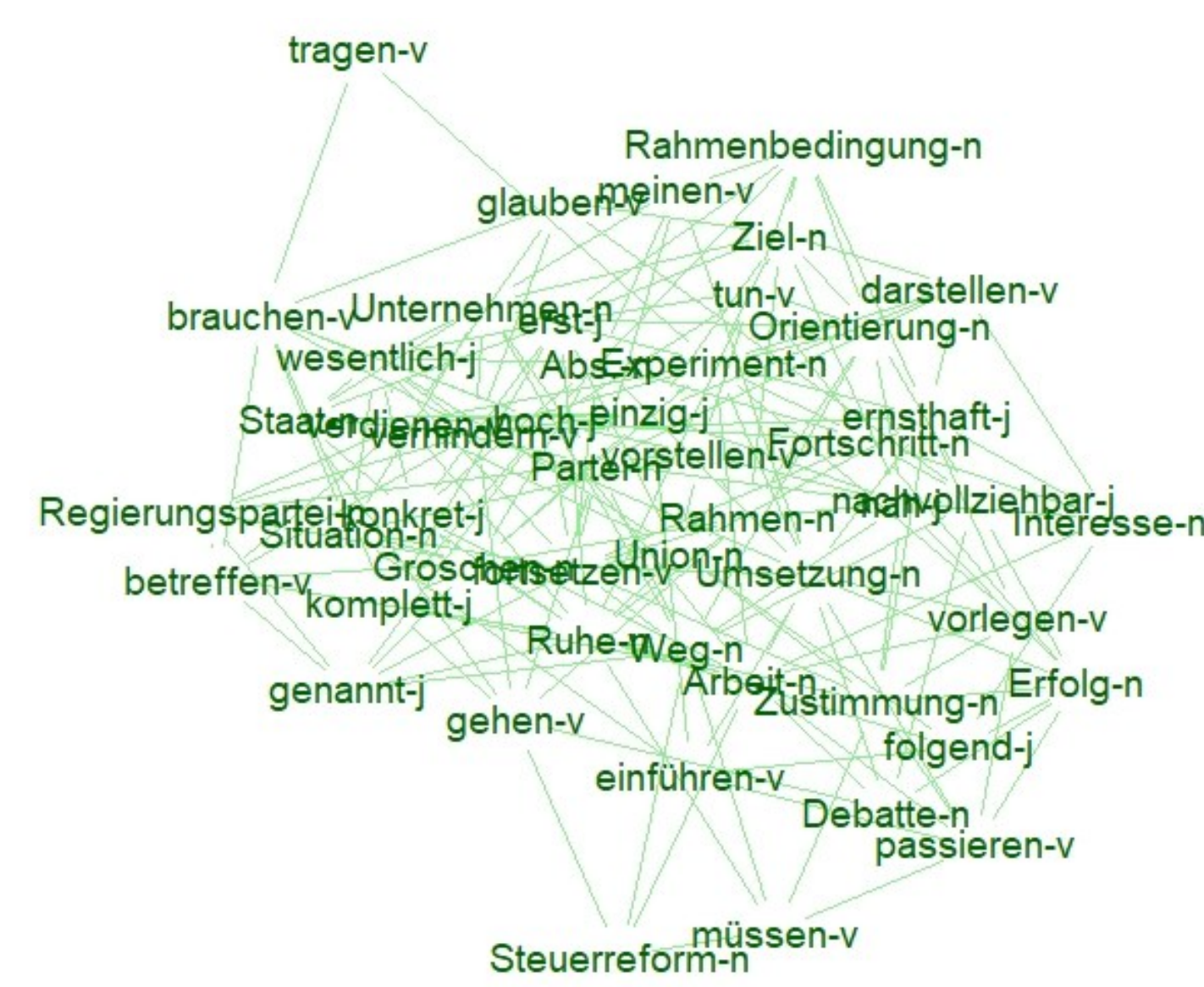
Debates play an important role in **positioning a party or politician** in contrast to their political opponents.

We explore **topical and discursive unity and divergence** within and across parties.

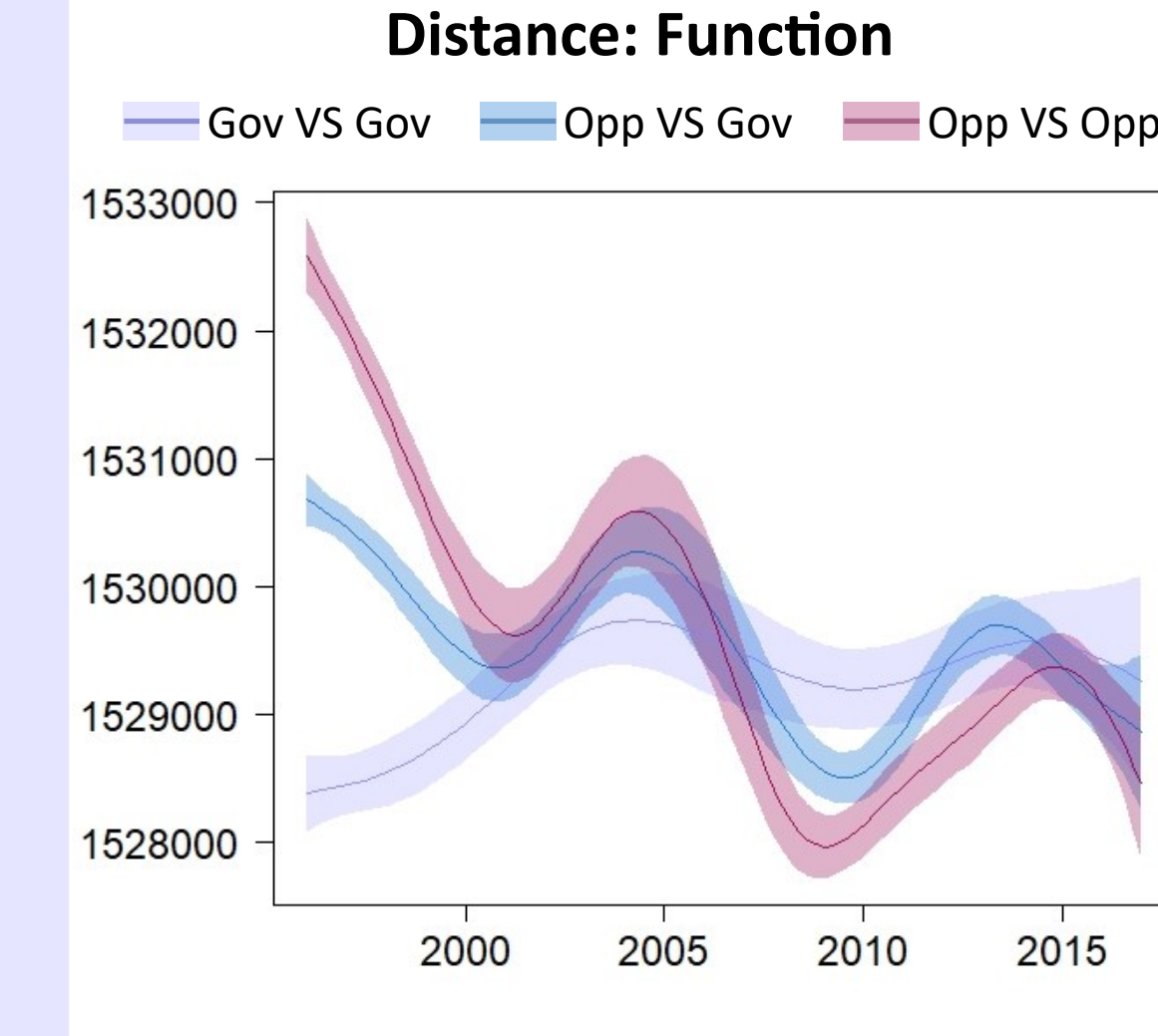
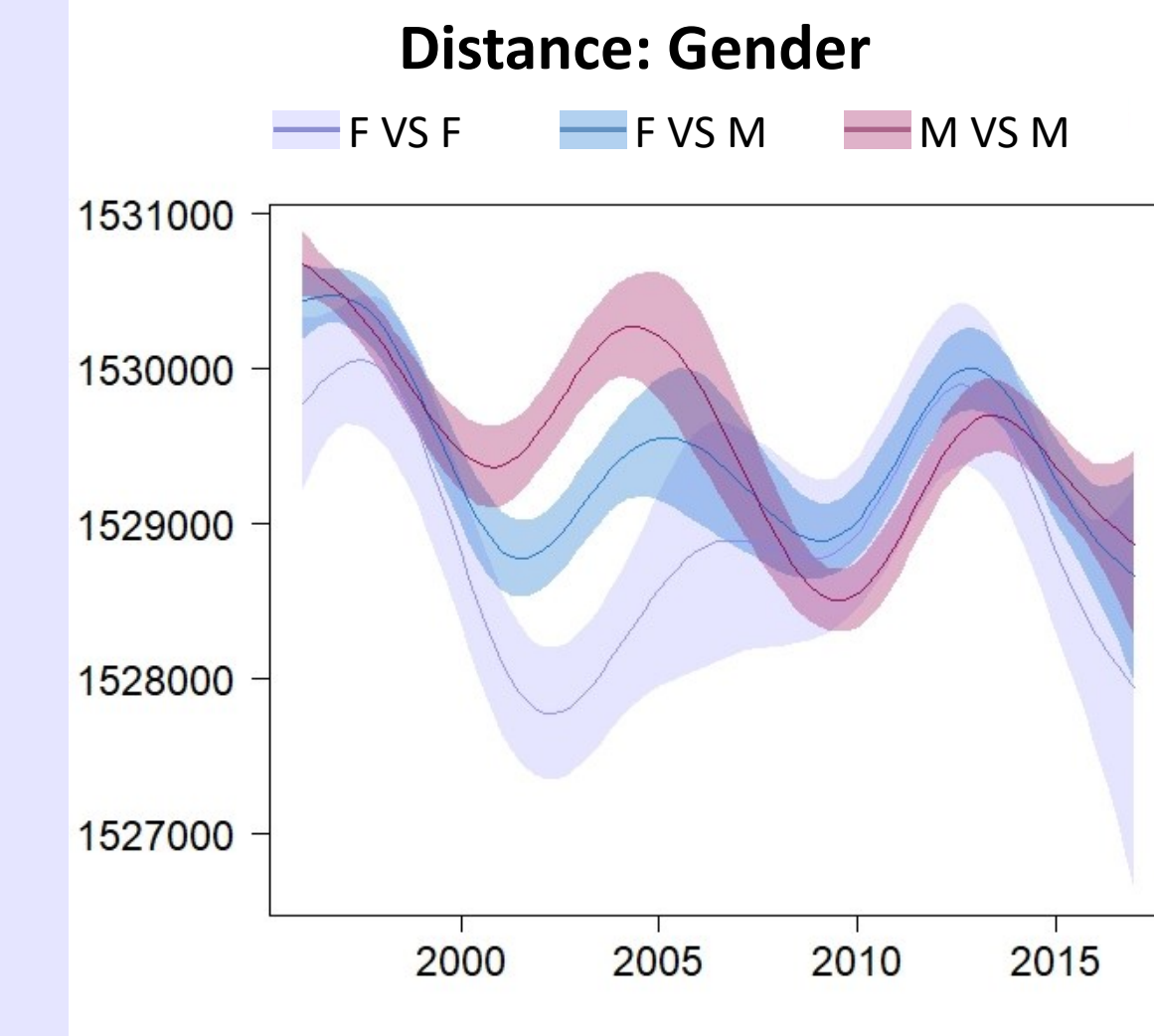
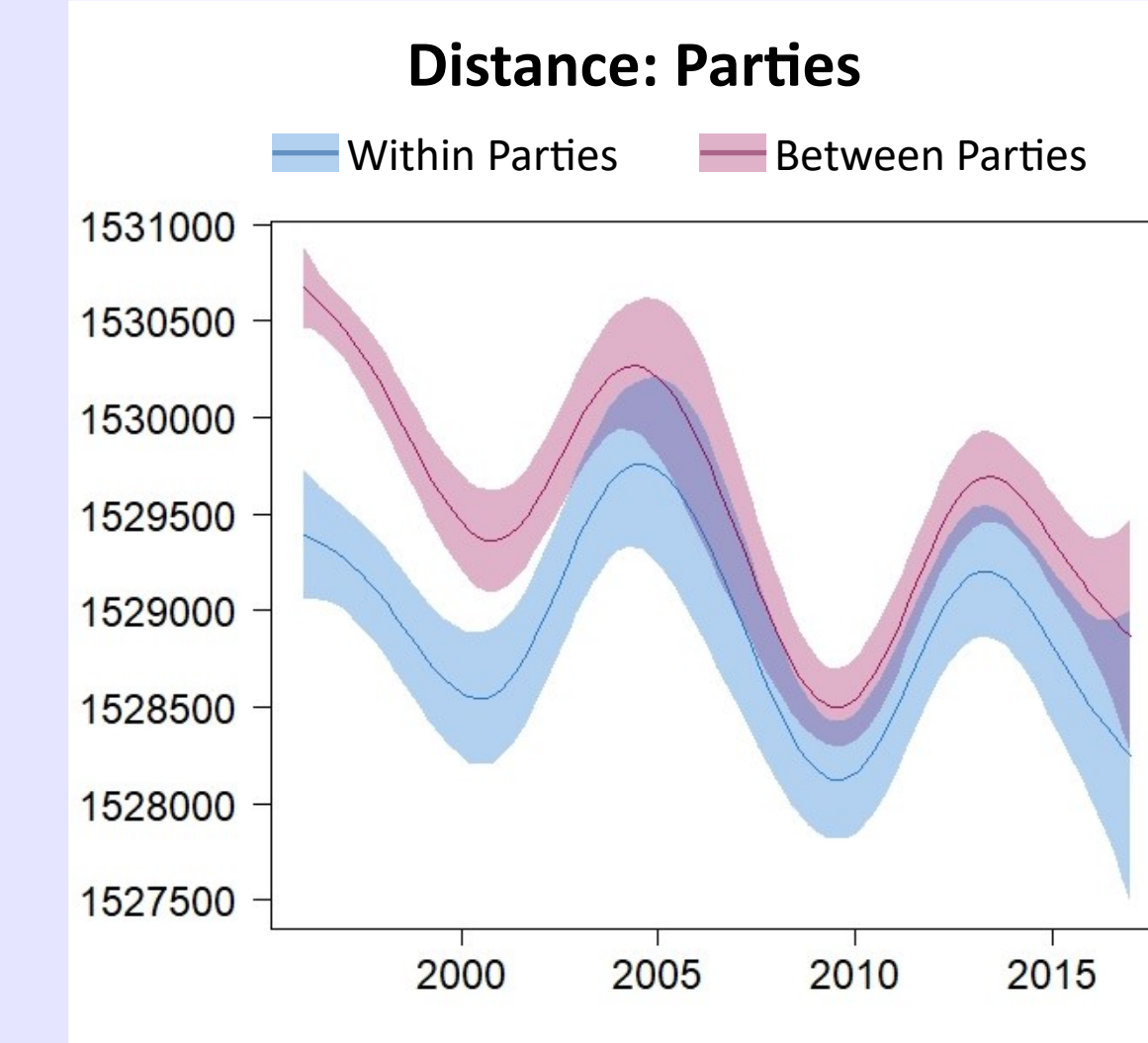
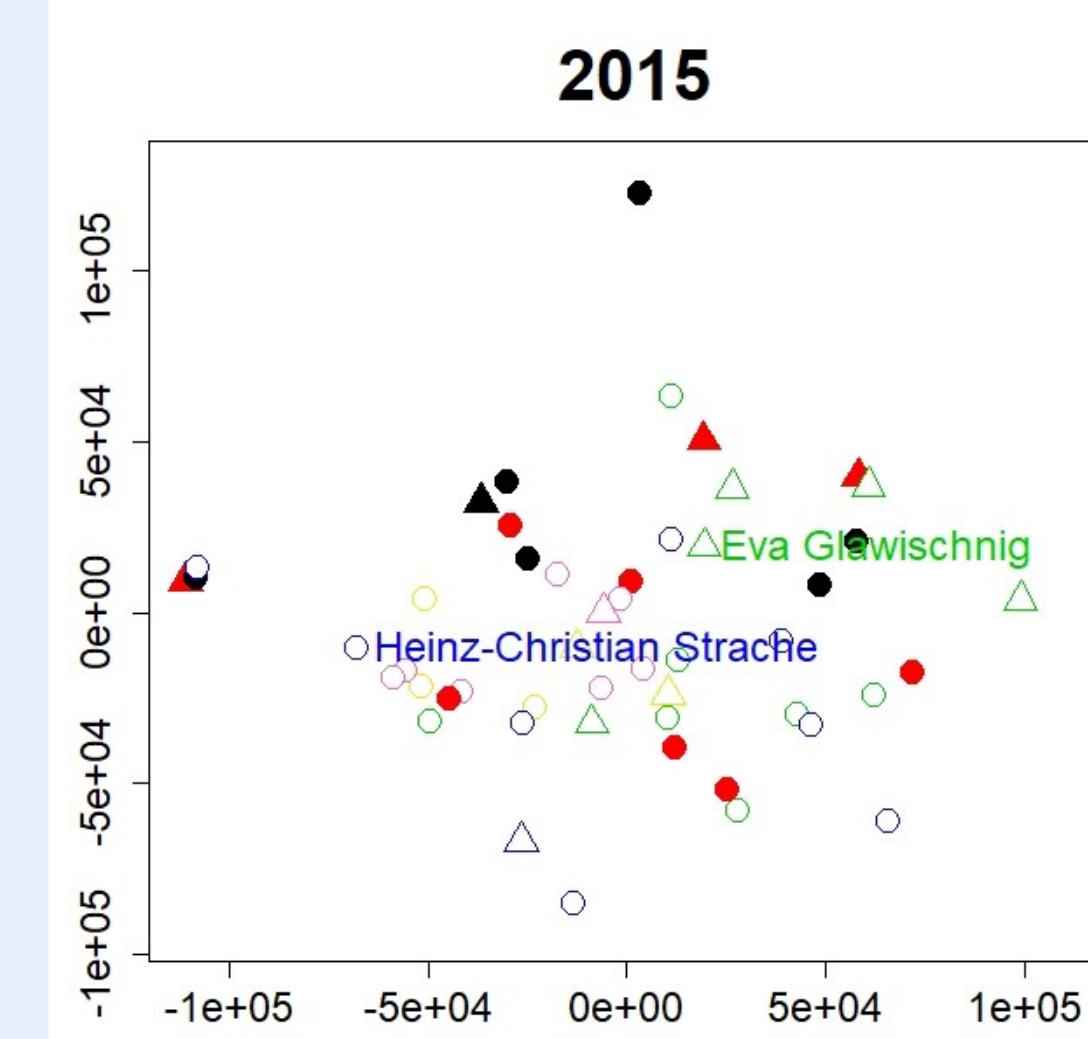
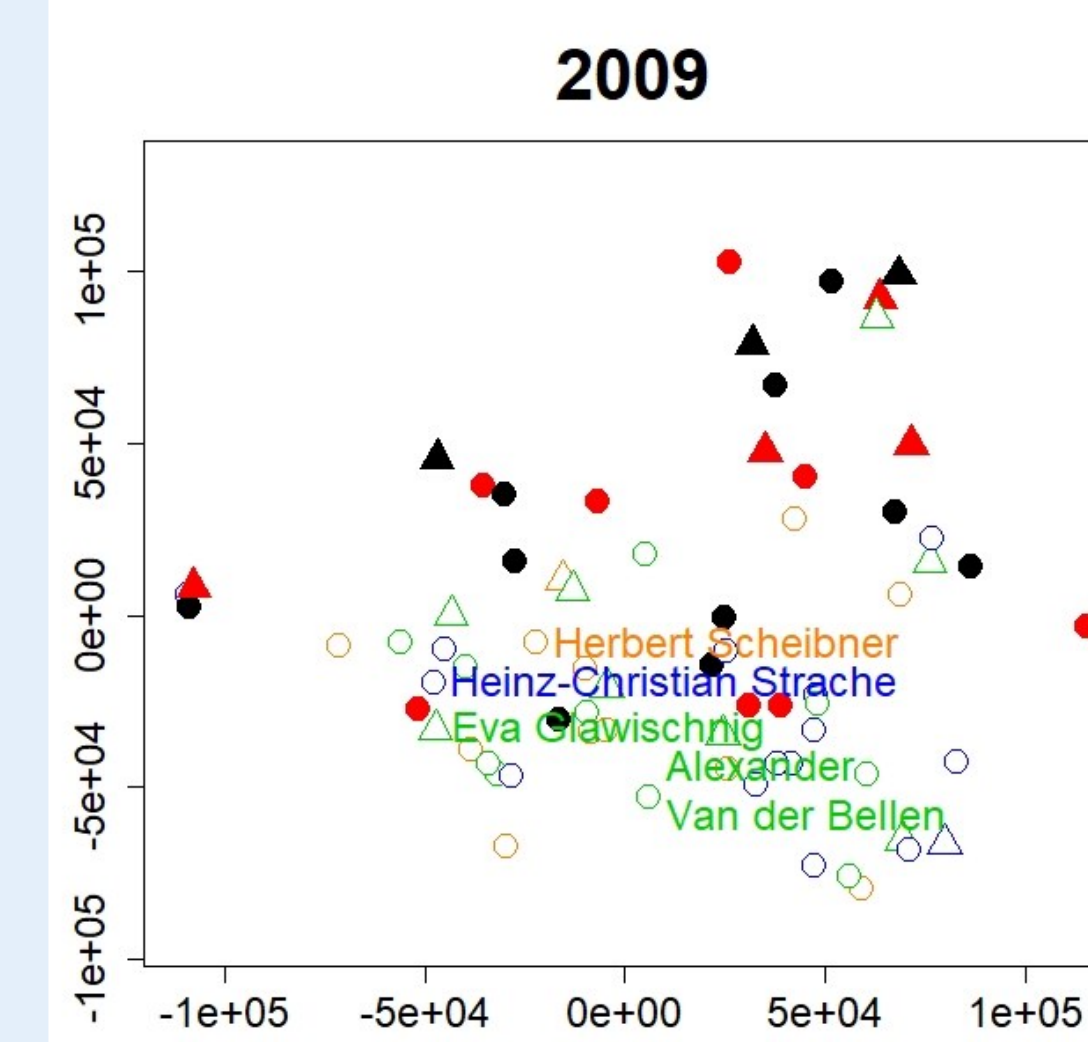
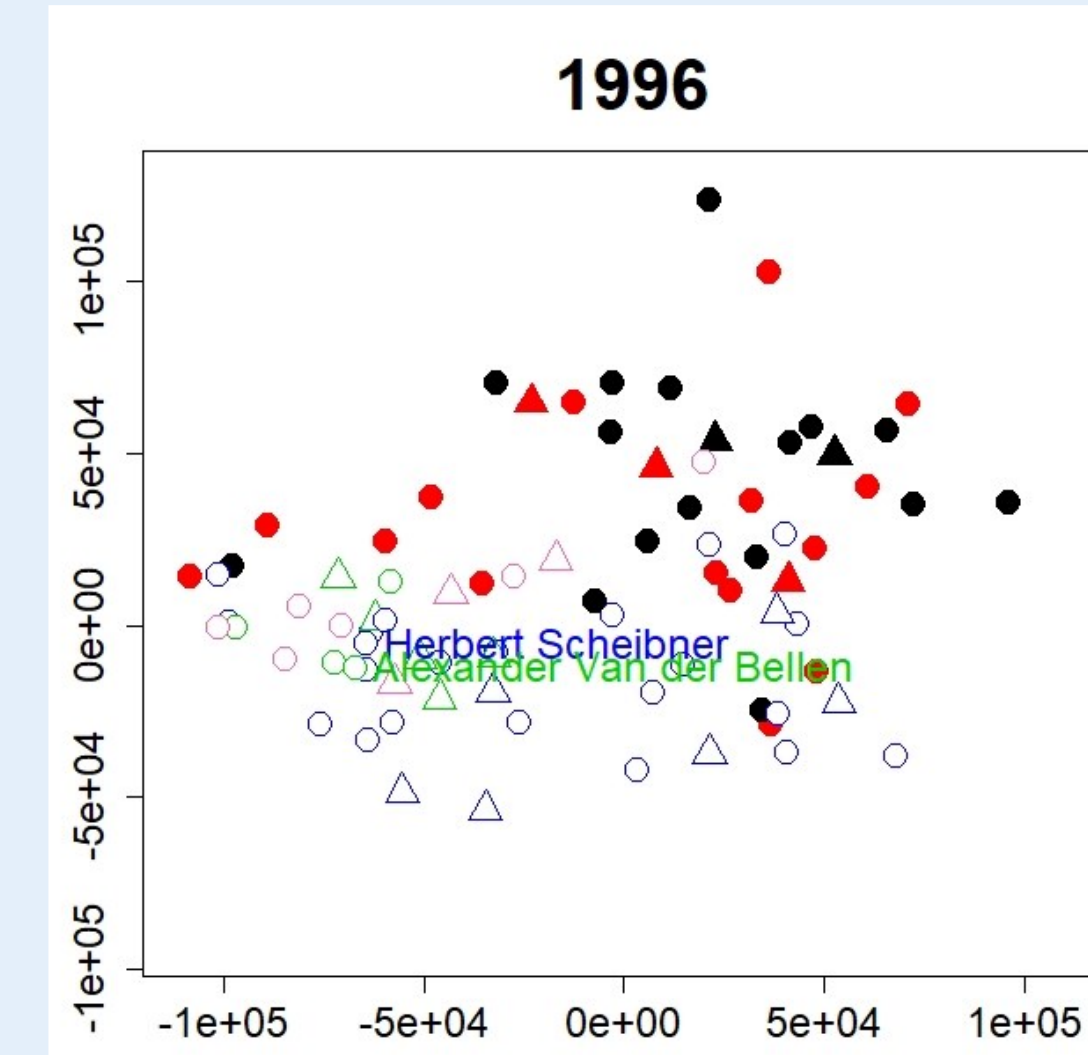
We base our analysis on the **Corpus of Austrian Parliamentary Records (ParLAT)**, 1996-2017.



Heinz-Christian Strache
(FPÖ, 2009)



Eva Glawischnig
(Grüne, 2015)



Multidimensional Scaling

We use **Canberra Distance** to determine the similarity/distance between politicians' networks in consecutive years.

We use **Multidimensional Scaling** to visualize the similarity/distances among networks.

Generalized Additive Models

Similarity between politicians' discourse patterns **fluctuates over time**.

There is a slight overall trend towards **more convergence**, between and within parties.

Distance between **opposition parties decreased**; distance between **government parties increased**.

Constructing networks

We construct **similarity-based network representations** of speaker's typical **lexical repertoires** in every year to model the topical and discursive patterns in their speeches.

We rely on adaptations of the **skip gram algorithm** for network construction.

References

- Atzpodien, Dana Siobhan (2020). Party competition in migration debates: The influence of the AfD on party positions in German state parliaments, *German Politics*, DOI: <https://doi.org/10.1080/09644008.2020.1860211>
- Baayen, R. H. (2008). *Analyzing linguistic data. A practical introduction to statistics using R*. Cambridge: Cambridge University Press, DOI: <https://doi.org/10.1017/CBO9780511801686>
- Horn, R. A.; Johnson, C. R. (2012). *Matrix analysis*. Cambridge: Cambridge University Press, DOI: <https://doi.org/10.1017/CBO9780511810817>
- Huang, Leslie; Perry, Patrick O.; Spirling, Arthur (2020). A general model of author "style" with application to the UK House of Commons, 1935–2018. *Political Analysis* 28, 412-434, DOI: <https://doi.org/10.1017/pan.2019.49>
- Mikolov, Thomas; Sutskever, Ilya; Chen, Kai; Corrado, Greg; Dean, Jeffrey (2013). Distributed representations of words and phrases and their compositionality. *Advances in Neural Information Processing Systems* 26, 3111-3119, <https://arxiv.org/abs/1310.4546>
- Wang, Shirui; Zhou, Wenan; Jiang, Chao (2020). A survey of word embeddings based on deep learning. *Computing* 102, 717-740, DOI: <https://doi.org/10.1007/s00607-019-00768-7>
- Wissik, Tanja; Pirker, Hannes (2018). ParLAT beta Corpus of Austrian Parliamentary Records. In: *Proceedings of the LREC 2018 Workshop ParlaCLARIN: LREC2018 workshop on creating and using parliamentary corpora*, 20-23.
- Wood, S. N. (2006). *Generalized additive models. An introduction with R*. Boca Raton, FL: Chapman & Hall/CRC, DOI: <https://doi.org/10.1201/9781315370279>

¹ Faculty of Informatics, TU Wien

anna.marakasova@tuwien.ac.at, julia.neidhardt@ec.tuwien.ac.at

² Department of European and Comparative Literature and Language Studies and Department of English and American Studies, University of Vienna

klaus.hofmann@univie.ac.at, andreas.baumann@univie.ac.at

³ Austrian Centre for Digital Humanities, Austrian Academy of Sciences

tanja.wissik@oeaw.ac.at

Funding: ÖAW goldigital Next Generation grant (GDNG 2018-020)